

FYC & SS Shoreline Facilities Review

Presentation to members Nov 20, 2017

Outline:

Background

1. Facilities Review – Goal
2. Description FYC shoreline facilities (north dock & south walkways, docks, ramps)
3. Current and Historical Conditions
4. Process
 1. Committee
 2. Members
 3. Alternatives
 4. Evaluation
 5. Plan



FYC & SS Shoreline Facilities Review

1. Facilities Review

Preliminary Goal:

- to prepare a Repair Plan for shoreline facilities

Potential Rationale - Measures:

- structural, maintenance, effort, safety, environmental, use, function, cost, liability, lifecycle, budget, etc.

Processes:

- Inventory, Condition, Input, Alternatives, Evaluation, Plan

Solutions:

- Committee, Information, Surveys, Members

Next Steps (see last slide):

- Presentation, Participation, Adoption



FYC & SS Shoreline Facilities Review

2. FYC shoreline facilities



North Dock and Ramp (main dock)

- constructed c. mid 1960s
- 500 ft long, max 8 ft high, embedded 1 – 3ft, some gaps at bottom, base (1991 repair)
- avg. (at normal levels) water depth at dock - 4.75 ft, min. – 3.9 ft (near ramp), max – 5.5 ft
- possibly post construction defects corrected with additional tiebacks, toe filling, toe stakes, \$ unknown
- 1980's – asphalt widened to 6 ft from 4 ft.
- 1991 - major section failure - 50 ft. new sheet wall - approx. \$15,000
- ~2005 – front depression topped with asphalt approx. \$3,000?
- 2009 – depression ~ 40 ft. of new ties /deadman and surfacing - \$9,000
- 2015 – depression 30 ft at north – continuous recycled asphalt top fill



FYC & SS Shoreline Facilities Review

2. FYC South Shoreline facilities



South Ramp and Walkways

- est. ramp constructed early 1970's
- est. walkways constructed similar time period as original SS wood docks constructed

Repair Works

- ramp: - est. regrade, extended, reinforced, edge concrete fill (cracking, slippage, erosion) all sorts rock fill, ground water routing
- walkway: - est. recapping sidewalk (tilting)

UTRCA: attached their wood dock for patrol boat

FYCSS: replaced wood docks with plastic in approx. 2011 through one member will donation

FYC: replaced wood docks / walkway with plastic in 2015 - 16, gabions, concrete



FYC & SS Shoreline Facilities Review

3. Current Conditions - North Dock

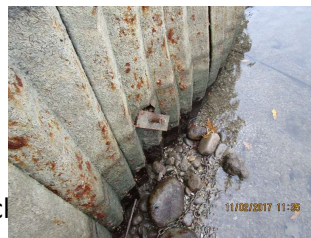


North end return deterioration – loss of backfill, opening joint, hazardous in board end



At Ramp

– 7 ties,
3 major tie back



2015 - 2017 filling



1992 new 50 ft. section

FYC & SS Shoreline Facilities Review

3. North Dock Historical issues



2009



1991



Fanshawe Yacht Club & Sailing School

FYC & SS Shoreline Facilities Review

3. FYC South Shoreline facilities



South Ramp



SS Walkway to south of ramp



walkway to north from ramp & gabion / concrete block



FYC & SS Shoreline Facilities Review

3. Current Conditions South Facilities



One of two railings on each ramp removed which were integral structural members



100 ft. walkway – 3 ft wide – 65 ft. of gabion wire broken – rocks spill



FYC & SS Shoreline Facilities Review

4. The Process (draft proposal)

1. Establish Committee

- incl. as suggested by Executive –Commodore, Treasurer, SS Chair, Fleet Captain
- from membership - add interested members (with this presentation)

2. Committee - Membership survey

3. Committee Meet January 2018: – review goal, review survey input, conditions, develop draft alternatives /evaluation

3. Members meeting Jan 2018: - proposed alternatives / evaluation, input to alternatives /evaluation

4. Committee Meet February 2018 – finalize alternatives, evaluation, draft plan

5. Members meeting February 2018 – present recommended Repair Plan



FYC & SS Shoreline Facilities Review

