

FYC & SS Shoreline Facilities Review

Presentation February 27, 2018

The Process (update from Nov 20 and Jan 27 presentations)

1. Establish Committee

- incl. as suggested by Executive –Commodore, Treasurer, SS Chair, Fleet Captain (John Kabel, Chris Fogelman, Arthur van Raalte, Lawrence Lynch, Rick Goldt, Nick Calender)

- from membership - add interested members (Jens Biskaborn, Rob Perquin)

2. Committee - Membership survey (completed: results summarized – Jan 18 mtg.)

3. Committee Meet January 2018: – review goal, review survey input, conditions, develop draft alternatives /evaluation (2 meetings held with draft alternatives and evaluation criteria reviewed)

3. Members meeting Jan 2018: - proposed alternatives / evaluation, input to alternatives /evaluation (now at Feb 27 General mtg.)

4. Committee Meet February 2018 – finalize alternatives, evaluation, draft plan (March '18 meeting)

5. Members meeting February 2018 – present recommended Repair Plan (possibly March '18)

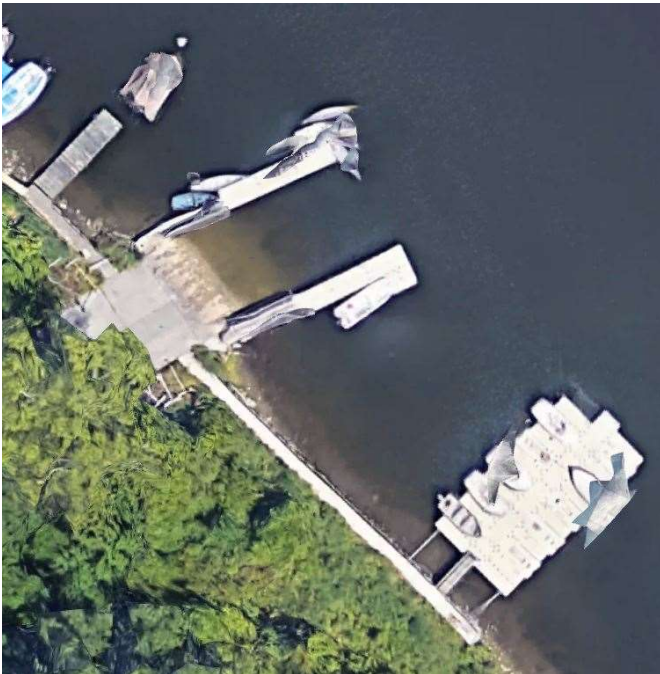


FYC & SS Shoreline Facilities Review

Two areas of review:

1. South:

- Floating Docks, including Sailing School Floating Docks, & Sailing School Walkway



2. North Dock:



Fanshawe Yacht Club & Sailing School



FYC & SS Shoreline Facilities Review

South Dock Area (incl. Sailing School):

Main Alternatives;

- 1) Do Nothing or No Action
- 2) Improve Anchorage - South Ramp Floating Docks
- 3) South Dock Extensions and Improve Anchorage
- 4) Repair and Cap Sailing School Wall & Walkway
- 5) Move SS Docks to Main Dock Area
- 6) Add SS Docks to South Ramp Docks



Draft Criteria for evaluating alternatives - Introduction

Cost X 2 L=5, M=3, H=1	Tech / Admin Feasibility L1-H5	Maintenance X 2 L=5, M=3, H=1	Desirability L=1	Safety L1-H5	Environment L1-H5 L=1	Permits L1-H5	Gen. Adv vs Disadv L1-H5	Total	R A N K
-------------------------------------	---	---	---------------------	-----------------	-----------------------------	------------------	--------------------------------	-------	------------------

Consideration of Cost in Criteria.

Cost is an important factor and should be considered vs FYC financial status. Relative Cost of each alternative are described in the following pages as between Very Low (VL) – Very High (VH) for the alternatives presented. Up to a Medium (M) cost assignment suggests cost feasibility within present FYC self capacity.

FYC & SS Shoreline Facilities Review

South Docks and SS Wall and Walkway

South Docks and SS Alt 1 – Do Nothing (Very Low – Medium)

South Docks only - Alternative 2 a) & b)

- a) inward anchors (cost: Very Low)
- or b) piles (VL)



FYC & SS Shoreline Facilities Review

South Docks Alternative 3 a) & b)

- excavation,
- Inward and outward docks added, inward pile or anchor (Low)



Fanshawe Yacht Club & Sailing School

FYC & SS Shoreline Facilities Review

South Docks Alternative 4 a) &b)

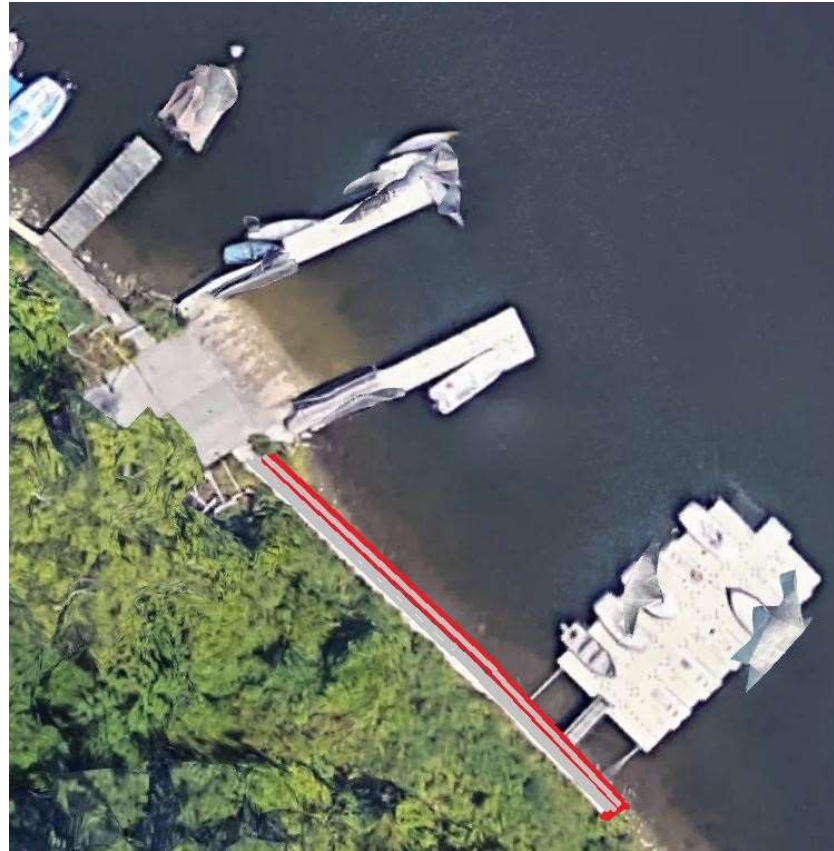
Wall and Walkway - Brace Wall and

Recap

- a) Mass concrete (L)

Or /

- B) Sheet Pile (Medium)



Fanshawe Yacht Club & Sailing School



FYC & SS Shoreline Facilities Review

South Docks Alternative 5

- Sailing School Docks to North Dock area (VL)



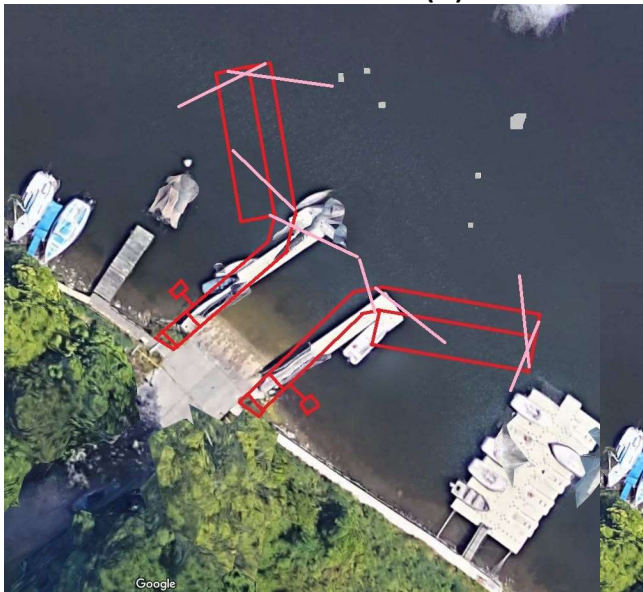
Fanshawe Yacht Club & Sailing School



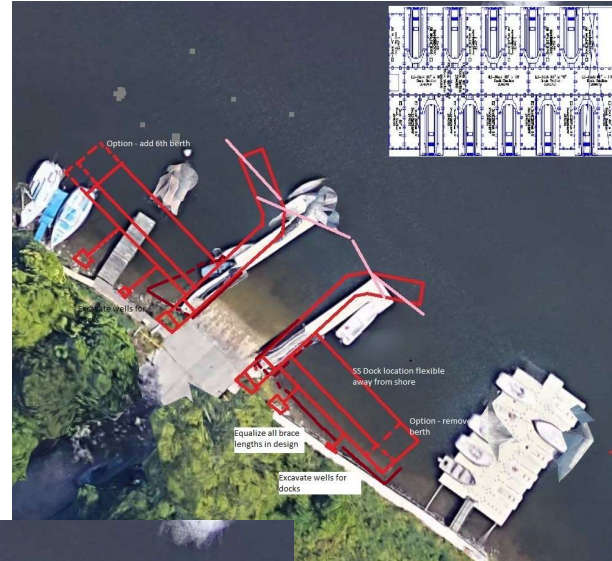
FYC & SS Shoreline Facilities Review

South Docks Alternative 6 a) – d)

- Join SS Docks and South Ramp Docks
- Includes Alt 3 ---- (L)



6b)



6a)



6c)



FYC & SS Shoreline Facilities Review

North Dock:

Main Alternatives;

- 1) Do Nothing
- 2) Adhoc Repairs as needed
- 3) Replacement
- 4) Three large abutments with finger docks
- 5) Two reduced abutments w. finger or connecting floating docks.
- 6) Floating Docks.



FYC & SS Shoreline Facilities Review

North Dock Alternatives;

- 1) Do Nothing (H – VH)
- 2) Adhoc Repairs as needed (M- H)



Fanshawe Yacht Club & Sailing School



FYC & SS Shoreline Facilities Review

North Dock Alternatives;

3) Engineering & Replacement (VH)



Fanshawe Yacht Club & Sailing School



FYC & SS Shoreline Facilities Review

North Dock Alternatives;

4) Three large abutments at existing access locations with finger docks (VH)

4a) Phasing in of floating docks (H)



FYC & SS Shoreline Facilities Review

North Dock Alternatives;
5) As Alt 4 and shoreline
erosion control with walkway (VH)



Fanshawe Yacht Club & Sailing School



FYC & SS Shoreline Facilities Review

North Dock Alternatives;

6) Alt 5 Phased – example (VH)



FYC & SS Shoreline Facilities Review

North Dock Alternatives;

7a) Alt 4,5,6 scaled down,
less finger docks

(M – H)

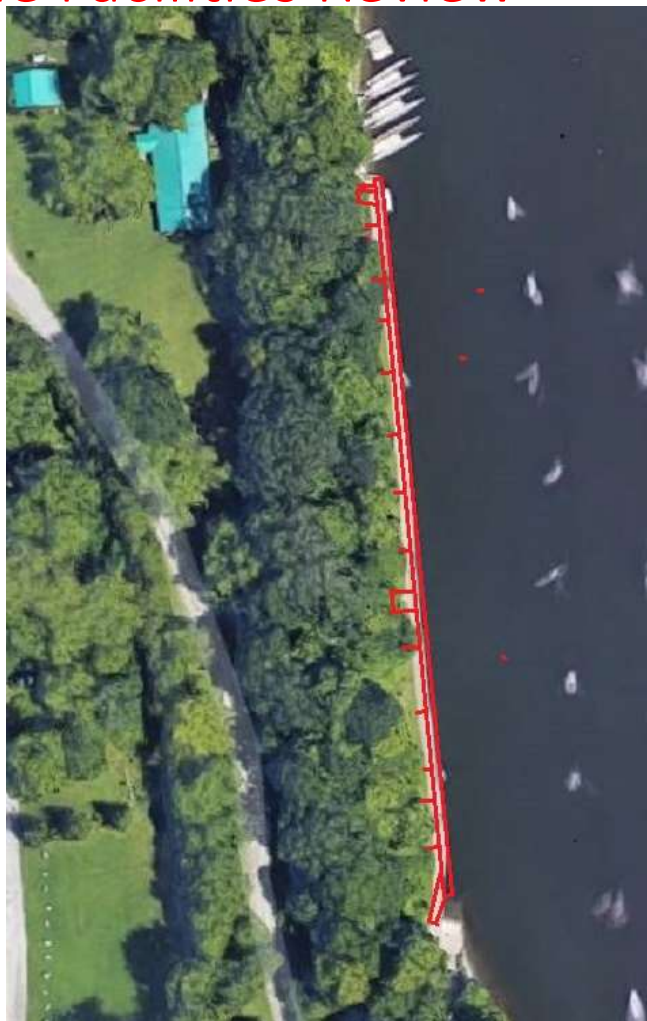
7 b) Floats moved to between
abutments and added (M-H)



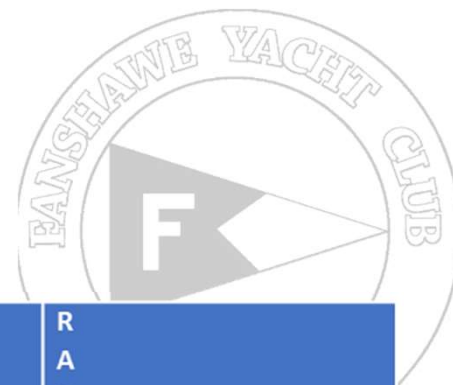
FYC & SS Shoreline Facilities Review

North Dock Alternatives;

8) Replace wall with
floating docks over length (H)



FYC & SS Shoreline Facilities Review



Draft Criteria for evaluating alternatives

Cost X 2 L=5, M=3, H=1	Tech / Admin Feasibility L1-H5	Maintenance X 2 L=5, M=3, H=1	Desirability L=1	Safety L1-H5	Environment L1-H5 L=1	Permits L1-H5	Gen. Adv vs Disadv L1-H5	Total	R A N K
-------------------------------------	---	---	---------------------	-----------------	-----------------------------	------------------	--------------------------------	-------	------------------

Consideration of Cost in Criteria.

Cost is an important factor and should be considered vs FYC financial status. Relative Cost of each alternative are described in the following as between Very Low (VL) – Very High (VH) for the following alternatives. Up to a Medium (M) cost assignment suggests potential cost feasibility within present FYC self funding capacity.

Undertaking the Evaluation.

- **Membership** – welcome any comments on work to- date – other alternatives, other criteria – email rgoldt38585@gmail.com to receive slide show (pdf) and Alternative evaluation sheets and instructions (WORD or pdf) and return by March 8,2018.

- Team to pool evaluations in coming weeks to select one or more preferred alternatives.
- Team must weigh in combination the North Dock and South Dock and SS Walkway Alternatives in order to develop a Plan.
- Come back to Members at future meeting to present Plan.
- Other factors such as membership, funding, partnership opportunities etc. will help direct and modify plan in future.
- Plan will need to be considered with other aspects of capital required in the long term for FYC such as grounds, buildings, services, equipment, etc. and any works prioritized within the entire setting of the FYC.